



TRUST MOBILE



TRUSTLINE
INVESTMENT IDEAS. SIMPLIFIED.



Logging in to Trust Mobile Application

Login Screen:

The login screen is visible when the user clicks on login button of top toolbar. The Valid User Id and Password must be entered, and the user should click on the Continue button.

After successful authentication of User ID and password, user will be asked to fill a set of security questions, and should click on the Login button. A loading mask will appear and

user will be logged in.



Change Password:

When the user logs in for the first time or if the password has expired, the following message prompt will be displayed.

Reset Login Password

User ID **ZLITE10**

Old Password
Enter old password

New Password
Enter new Password

Confirm new Password
Confirm new Password

Submit

When the user clicks on the OK button, the window for resetting the login password is displayed as follows.

The user needs to type in the old password, the new password, and confirm the new password in the respective fields provided. On clicking on the 'Reset Login Password' Button, the password gets reset and the following confirmation message will be displayed.

Settings

Change Login Password >

Change the **Success** Password >

Upload Logs >

Password changed successfully.

OK



Once the user clicks on OK, the following message prompt is displayed to reset the transaction password.

Reset Transaction Password

User ID **ZLITE10**

Old Password
Enter old password

New Password
Enter new Password

Confirm new Password
Confirm new Password

Submit

The user needs to enter the Old Password, the New Password, and confirm the New Password, in the respective fields provided. On clicking on the 'Reset Transaction Password' Button, the transaction password gets reset and the following confirmation message will be displayed.

Settings

Change Login Password >

Change Transaction Password > **Success**

Password changed successfully.
Change of A Locations >

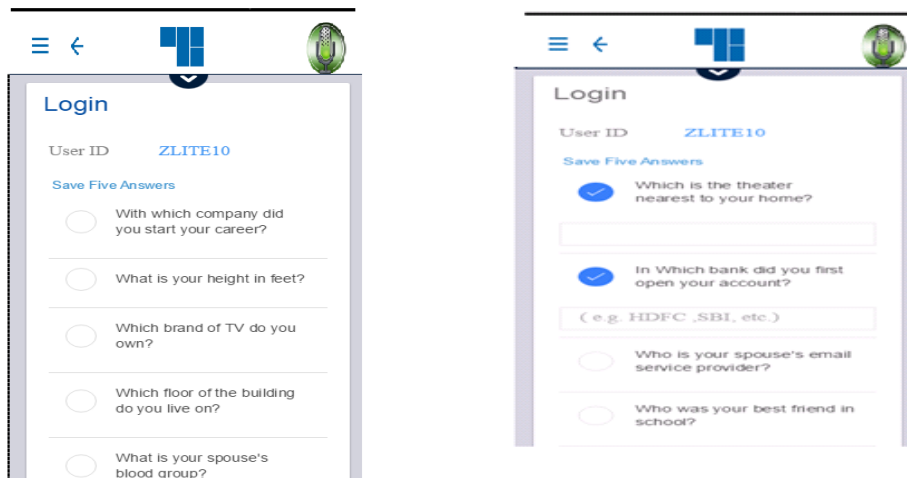
OK

Upload Logs >



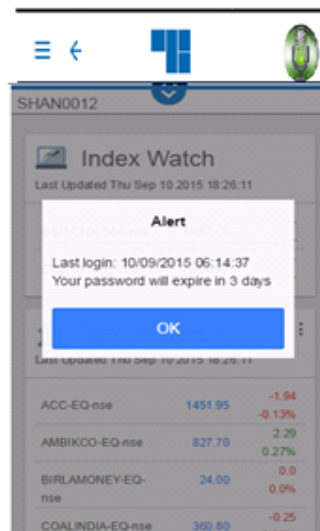
2FA Question Selection:

From settings menu users can select different 2FA questions as shown below. Users have to select at least 5 questions from list and the system will ask any 2 questions at the time of login. Upon selecting questions a textbox will appear for user to enter answers. Click on 'Save' for saving selections.



Password Expiry Warning:

The following Password Expiry Warning Message will be displayed, three days before the password is about to expire.





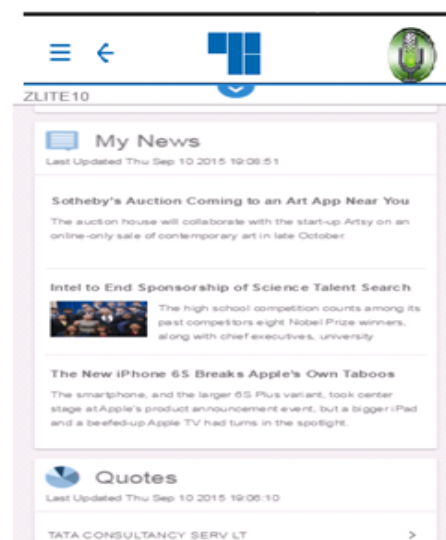
Password Policy:

Following is the password policy followed in the NEST Mobile Application:

- For encryption of passwords we use 128bit encryption key with a proprietary logic, also have an option of storing it with 128bit encryption key and AES Encryption method.
- The system requests an ID & password for logging in.
- The password is encrypted before transmission.
- The password is stored in an encrypted format in the database.
- Change of password is mandatory for the first time user.
- Change password cannot be the same as of the last 3 passwords.
- User will be blocked and cannot login after THREE consecutive wrong passwords & the user can login only after the password is reset by the administrator.
- The password should be of minimum 6 characters & maximum 12 characters in length.
- It must be Alpha numeric
- The password will be checked against the log-in ID. The login ID & password cannot be the same.
- Space is not a valid character in the password.
- Password expires automatically after 14 trading days forcing the user to choose a new password.
- Password can be changed by the users at any time as per user's will.

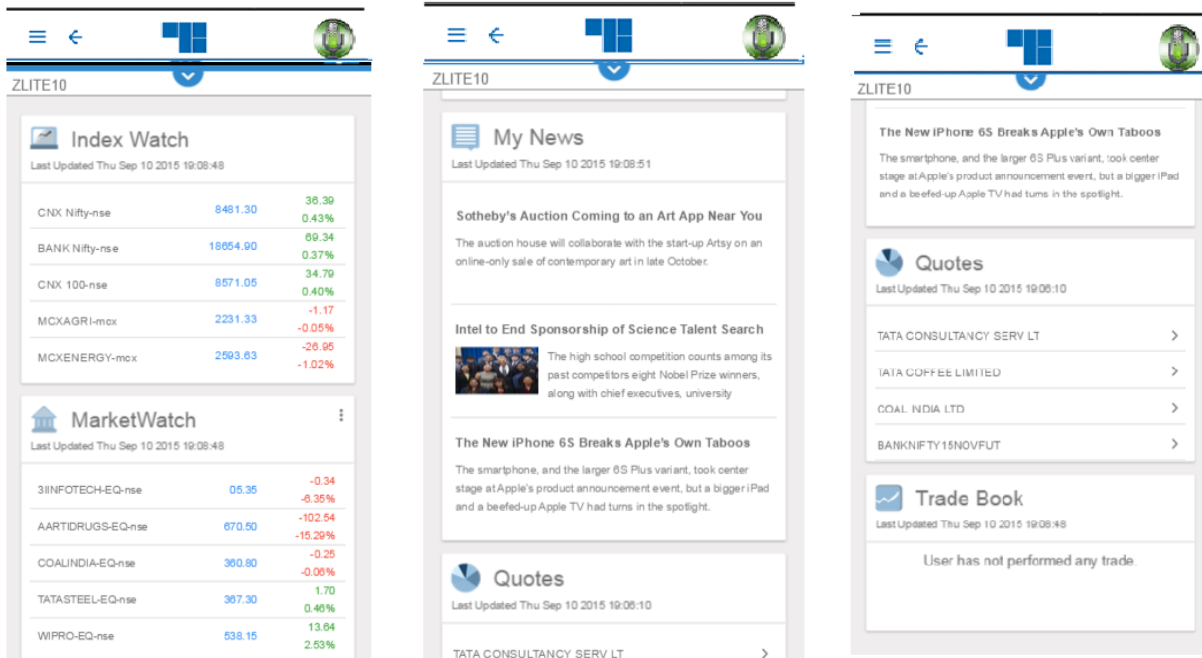
3.1 Home Page

When user launches the application **Default Dashboard** with only Index Watch, My News and Quotes cards will be shown.

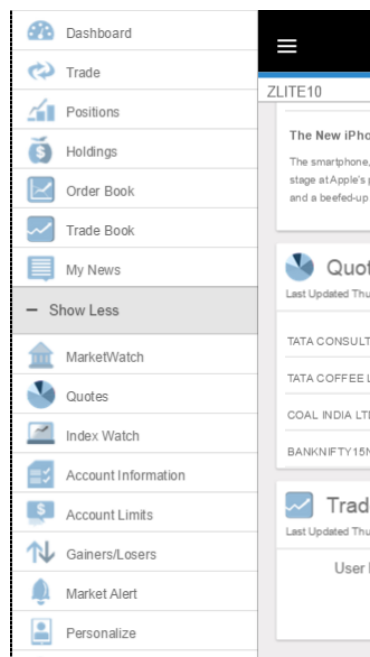




After user has successfully logged in, the following home page window gets displayed, where the user has the option to get quotes, news, index watch, market watch, trade book and other information in the form of cards.



Other options like market alerts, personalize, settings etc. are presented in form of side menu that can be seen by clicking on more options on the top toolbar.





Quotes:

The 'Quotes' feature enables the user to retrieve real-time quotes on securities. It displays information such as Last Traded Price, Best Buy Rate and Quantity, Best Sell Rate and Quantity, Volume, Price Range and so on for the selected security.

Recent Quotes

Exchange: NSE Series: --Select Series--

Symbol/Company Name:

Enter minimum 3 characters

Recent Quotes

The user must select the exchange as NSE and enter the symbol or the company name for which he wishes to view the price quotes, in the respective fields provided.

If the user has entered the proper symbol, he will be able to view the quotes for that symbol in the selected exchange, but if the user has entered the company name for a selected exchange, then the following screen will appear featuring a company list based on the name the user types in.

Recent Quotes

Exchange: NSE Series: --Select Series--

Symbol/Company Name: tata

TATA CHEMICALS LTD (EQ)

TATA CHEMICALS LTD (BL)

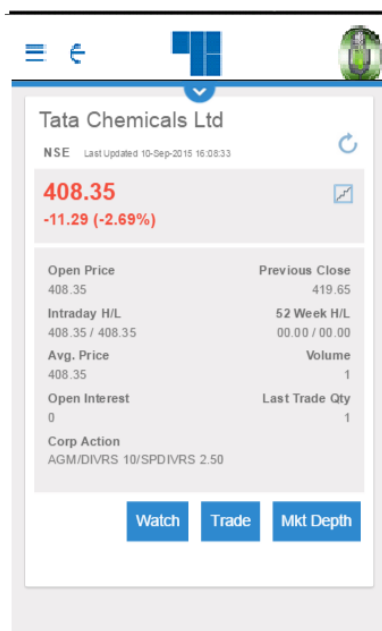
TATA COFFEE LIMITED (BL)

TATA COFFEE LIMITED (EQ)

Recent Quotes



The user can select the symbol for which he wants to view quotes from the company list and then get quotes for that symbol.



The user can get quotes for F&O Scrips as well, from the main 'Quotes' option on side menu. The desired Instrument type (FUTIDX, OPTIDX, FUTSTK, OPTSTK) must be selected from the drop-down. A minimum of 3 characters must be entered in the 'Company' field, for the symbol for which the price quote is desired. The expiry date should be selected for the same.

A list of contracts will be displayed based on the characters entered by the user, from where he must select the desired contract to get quotes for the selected contract.

Recent Quotes

Exchange: NSEFO

Instrument: FUTIDX

Symbol Name: BANKNIFTY

Expiry Date: --Select Expiry Date--

[Recent Quotes](#)



Trade:

When the user clicks on the 'Trade' option in the side menu, he will have the 'Buy/ Sell' option, through which he will be able to place orders; he must click on 'Order Book' option, 'Trade Book' option, 'Positions' option to view his order book, trade book and existing positions, respectively.

• Buy/ Sell in NSE:

The user has to click on the 'Trade' option to place orders, and the following screen appears.

The screenshot shows a mobile application interface for placing a trade order. The form is titled "Trade" and is set against a light blue background. At the top, there are navigation icons: a menu icon, a back arrow, the application logo, and a globe icon. The form fields are as follows:

- Exchange:** A dropdown menu with "NSE" selected.
- Symbol/Name:** A text input field containing "TCS-EQ" with a search icon to its right.
- LTP:** A text input field containing "2575.00" with a refresh icon to its right.
- Action:** A dropdown menu with "Buy" selected.
- Qty:** A text input field containing "1".
- Price Type:** A dropdown menu with "Market" selected.
- Validity:** A dropdown menu with "DAY" selected.
- Disclosed Qty:** A text input field containing "Qty".
- Product Type:** A dropdown menu with "NRML" selected.
- AMO:** A toggle switch that is currently turned off.

At the bottom of the form, there are two buttons: "Clear" and "Submit".

The user must select the exchange as NSE from the drop down, enter the symbol name (on entering symbol name or company name it will display an overlay from which the user can select the desired symbol name). The user must then select the Action (Buy or Sell) from the drop down provided, enter the quantity to be bought/ sold, select the desired price type (Limit/ Market and so on), enter the price (if it's a limit order), enter the trigger price (in case of stop loss orders) and click on 'Submit'. The following 'Trade Summary' screen will appear showing the details entered in the Buy/ Sell window.



Trade Summary

Your order will be placed with below Details:

Exchange	NSE
Symbol	TCS-EQ
Action	Buy
Qty	1
Price Type	Market
LTP	2575.00
Limit Price	0
Validity	DAY
Disclosed Qty	0
Product Code	NRML

Transaction Password

After reviewing the order details, the user needs to enter the Transaction password and click on 'Submit'. On clicking on 'Submit', the Order Confirmation pop up message will be displayed.

Trade Summary

Your order will be placed with below Details:

Exchange	NSE
Symbol	TCS-EQ
Action	Buy
Qty	1
Price Type	Market
LTP	2575.00
Limit Price	0
Validity	DAY
Disclosed Qty	0
Product Code	NRML

Transaction Password

Place order

Would you like to Place this order?



On clicking on 'OK', the Order will get placed. A new screen will appear showing the order details along with the Nest Order Number.

Exchange	NSE
Symbol	TCS-EQ
Buy/Sell	Buy
Qty	1
Price Type	Market
Validity	DAY
Disclosed Qty	0
Product Code	NRML

You may check the status of your Order, to Modify/Cancel order by clicking the order Book on your Mobile or Trading Portal.

[Trade Book](#) [Order Book](#)

- **Buy/ Sell in NSEFO:**

To place order in NSEFO, the user must select the exchange NSEFO from the drop down in the overlay that appears on click of symbol name, select the instrument, symbol name and expiry date. Once it is done, he must select the Action from the drop down as Buy or Sell, enter the quantity, and select the price type (Limit/ Market), enter the Limit Price (in case of Limit Orders) and click on 'Submit'.

Trade

Exchange: NSEFO

Instrument: FUTIDX

Symbol Name: BANKNIFTY

Expiry Date: --Select Expiry Date--

[Cancel](#)



On clicking on 'Submit', the following 'Trade Summary' screen will appear. The user must click on 'Submit' after reviewing the details.

Trade Summary

Your order will be placed with below Details:

Exchange	NSEFO
Symbol	BANKNIFTY15OCTFUT
Action	Buy
Qty	25
Price Type	Market
LTP	17470.00
Limit Price	0
Validity	DAY
Disclosed Qty	0
Product Code	NRML

Transaction Password

[submit](#)

Once the 'Submit' button is clicked on, the order gets placed. The following window appears, displaying the order details along with the Nest Order Number.

Trade Confirmation

Nest Order# : 15091000000005

Exchange	NSEFO
Symbol	BANKNIFTY15OCTFUT
Buy/Sell	Buy
Qty	25
Price Type	Market
Validity	DAY
Disclosed Qty	0
Product Code	NRML

You may check the status of your Order, to Modify/Cancel order by clicking the order Book on your Mobile or Trading Portal.

[Trade Book](#) [Order Book](#)



From this window, the user can view the order details and order status by clicking on 'Order Book', or place another order by clicking on 'New Order'.

- **Order Types:**

- 1. Limit Order**

A limit order is an order to buy or sell a security at a specific price. A buy limit order can only be executed at the limit price or lower, and a sell limit order can only be executed at the limit price or higher.

E.g. If the current market price of Idea Cellular is Rs.75 & you wish to Buy at Rs. 70 or Sell at Rs. 80, you have to place a Limit Order.

- 2. Market Order**

A market order is an order to buy or sell a stock at the current market price. The advantage of a market order is you are almost always guaranteed your order will be executed.

- 3. Stop Loss Limit Order**

A stop loss limit order is an order to buy a security at no more (or sell at no less) than a specified limit price. This gives the trader some control over the price at which the trade is executed, but may prevent the order from being executed. A stop loss buy limit order can only be executed by the exchange at the limit price or lower. A stop loss sell limit order can only be executed at the limit price or higher.

E.g. If you have short sold NTPC @ Rs.145 in expectation that the price will fall, in case of price increase, you can limit the loss by placing a Stop Loss Buy order. In the Buy Screen we can put the trigger price @ Rs.150 and Limit Price @ Rs.155. As soon as NTPC's last traded price rises above Rs. 150, a limit order for NTPC @ Rs. 155 will get activated.

- 4. Stop Loss Market Order**

A stop loss market order is an order to buy or sell a security at the current market price prevailing at the time the stop order is triggered. This type of stop loss order gives the trader no control over the price at which the trade will be executed. A **sell stop market order** is an order to sell at the best available price after the price goes below the stop price. A sell stop price is always below the current market price. A **buy stop market order** is typically used to limit a loss (or to protect an existing profit) on a short sale. A buy stop price is always above the current market price.

- 5. After Market Order**

After Market Order allows you to place an order for a stock beyond market hours.

For example, let us suppose that after the close of regular trading hours, there is news announced about a company which induces people to invest in the company. You wish to be amongst the first to invest and not lose out on this opportunity. In such a case, you can immediately place an AMO order for the following trading day.

- **Product Type**

- 1. Cover Order**

A Cover Order is a special type of order through which the system will place two orders simultaneously: a market order and a corresponding stop loss market order which would



only get triggered at the specified stop loss trigger price. If the trigger price is hit, the stop loss order gets executed as a market order. Cover orders help trader limit any potential losses that could be incurred on a position.

2. Cash N Carry Order

A Cash N Carry (CNC) order is an order where investor needs to block the entire amount of required funds or shares at the time of order placement. It is suitable for long-term investors looking at safe exposure.

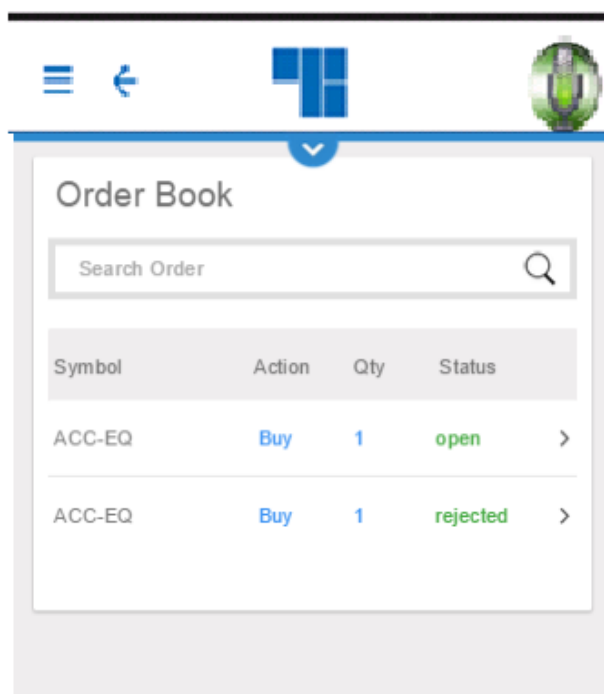
Transaction done in CNC is delivery transactions. On buy transactions there will be 100% margin blocking for the trading day. Sell transaction will be allowed based on holdings available and sale proceeds would be released for the trading day. CNC is preferable for delivery transactions in cash market.

3. Margin Intraday Square-Off Order

Margin Intraday Square-off is an exclusive feature for intra-day trading that facilitates you to make the most out of market movements. Unlike CNC instead of blocking 100% as margin, it only blocks a pre-specified percentage as margin. Clients can buy and sell specific stocks during the day. Clients need to square off their positions before 3.20pm OR RSL will square-off such open position before market closes. MIS is preferably done for intraday square off positions in cash market.

- **Order Book**

The user can view details of all the orders placed by him by clicking on 'Order Book' in the side menu. The user can also modify or cancel open orders from this window.





From the Order Book, the user can select a particular order for which he requires the order details.

ACC-EQ (NSE)	
Details History	
Order Id	15091000000052
Rejected Reasons	RMS:Rule: Check circuit limit including square off order exceeds for entity account-OPEN across exchange across segment across product
Exchange No	--
Symbol	ACC-EQ
Order Type	DAY
Buy/Sell	Buy
Qty	1
Pending Qty	0
Cancelled Qty	0

Pending Qty	
Cancelled Qty	0
Disclosed Qty	0
Traded Qty	--
Price	1568
Trigger Price	0
Average Price	00.00
Price Type	Limit
Product Code	NRML
Status	rejected
Confirm Date	10-Sep-2015
Remark	--

Order History:

The user must select 'Order History' to view the history of that order, that is, the user will be able to view the current status as well as details of each and every step of the status, such as order id, exchange number, symbol, order type, buy or sell, quantity etc.



ACC-EQ (NSE)

Details History

Symbol	ACC-EQ
Action	Buy
Qty	1
Type	Limit
Price	1568
Status	rejected

Symbol	ACC-EQ
Action	Buy
Qty	1
Type	Limit

ACC-EQ (NSE)

Qty	1
Type	Limit
Price	1568
Status	validation pending

Symbol	ACC-EQ
Action	Buy
Qty	1
Type	Limit
Price	1568
Status	put order req received

Order Modification:

To modify an order, the user must select the 'Modify' option from the order book. The following screen appears to enter the new parameters for order modification.

Trade

Exchange	NSE
Symbol/Name	ACC-EQ
LTP	1430.00

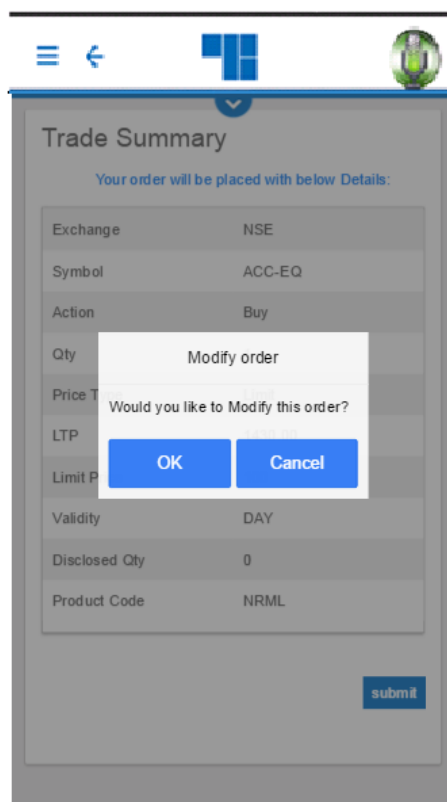
Action	Buy
Qty	1
Price Type	Limit
Limit Price	100
Validity	DAY
Disclosed Qty	Qty
Product Type	NRML
AMO	<input type="checkbox"/>

Clear Submit



The quantity and/ or price of the order can be modified by the user by entering the new details. Once the user clicks on 'Submit', the following 'Trade Summary' screen appears. The user can review these details, enter the transaction password and submit the modified order.

On clicking on 'Submit', the 'Modify Order Confirmation' pop up message will be displayed, whether to continue the modify order place or not.



Once the user clicks on 'OK', the order gets submitted, and a new window showing the modified order details will appear.

Order Cancellation:

To cancel an order, the user must select the required open order that needs to be cancelled, from the order book, and select the 'Cancel' option.



ACC-EQ (NSE)

Details History

Order Id: 15091000000097

Rejected Reasons: --

Exchange No: 2015091030070022

Symbol: ACC-EQ

Order Type: DAY

Buy/Sell: Buy

Qty: 1

Pending Qty: 1

Cancelled Qty: 0

Disclosed Qty: 0

Traded Qty: --

Price: 100

Trigger Price: 0

Average Price: 00.00

Price Type: Limit

Product Code: NRML

Status: open

Confirm Date: 10-Sep-2015

Remark: --

Cancel order **Modify**

The following 'Confirmation Message' will appear from where the user is required to confirm the order cancellation.

Disclosed Qty: 0

Traded Qty: --

Price: 100

Trigger Price: 0

Average Price: 00.00

Price Type: Limit

Product Code: NRML

Status: open

Confirm Date: 10-Sep-2015

Remark: --

Cancel order **Modify**

labelling order

Would you like to cancel this order

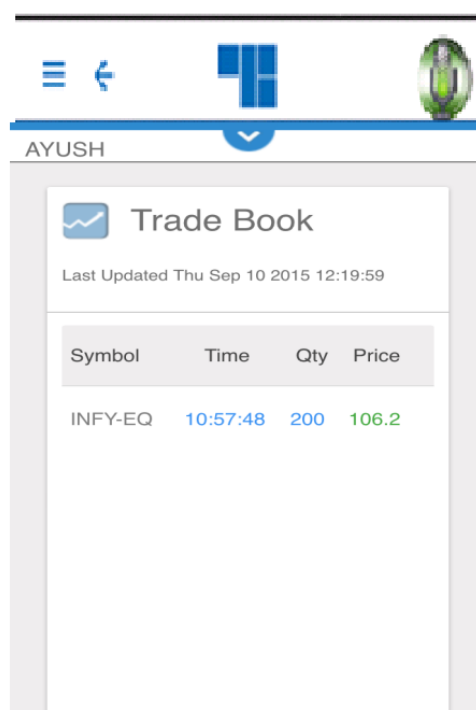
OK **Cancel**



When the user clicks on 'OK', the order will get cancelled, and this status can be checked in the Order Book.

- **Trade Book**

The user can view the entire list of all traded orders and their details by clicking on the 'Trade Book card' on the home screen or 'Trade Book' option in side menu.



Order Details:

The user can view the details of a particular trade by selecting that trade on the 'Trade Book' card. The details of that traded order will be displayed along with Exchange Order Number, Traded Quantity, Price and so on.



INFY-EQ (NSE)	
	Details History
Order Id	150415000029049
Exchange No	2015041534924502
Symbol	INFY-EQ
Buy/Sell	Sell
Qty to Fill	200
Traded Qty	200
Traded Price	106.2

Trade History:

The user can view the history of a particular trade by selecting that trade and clicking on 'Trade History'. The following window displaying the history of the order along with changes in price, quantity and so on, will appear.

INFY-EQ NSE	
	Details History
Symbol	TCS-EQ
Action	Buy
Qty	5
Type	Limit
Price	1202
Status	complete
Symbol	TCS-EQ

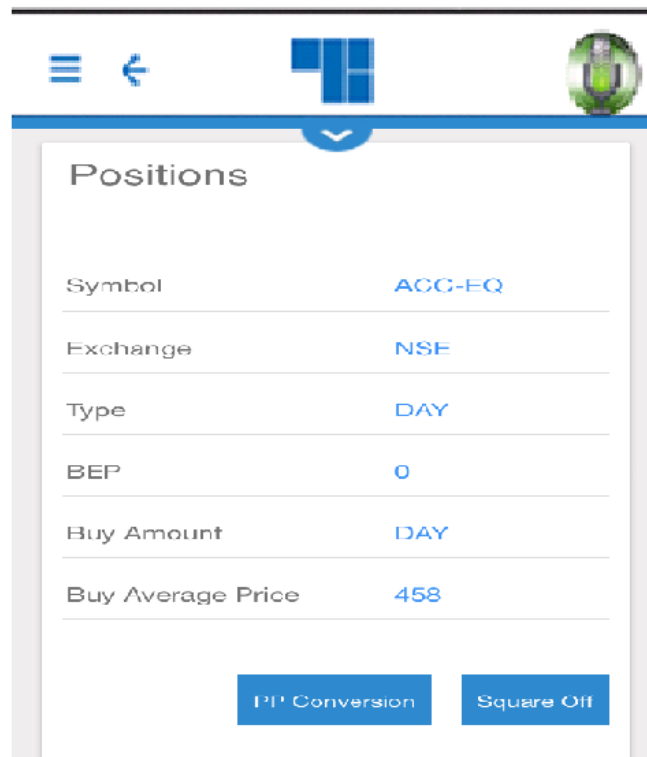


• Positions

The user can view his positions by clicking on the 'Positions' options in the side menu. The following screen will appear, from where the user can view day-wise as well as net-wise positions, by selecting the appropriate option.

Symbol	Net Qty	Net Amt
ACC-EQ	500	0 >

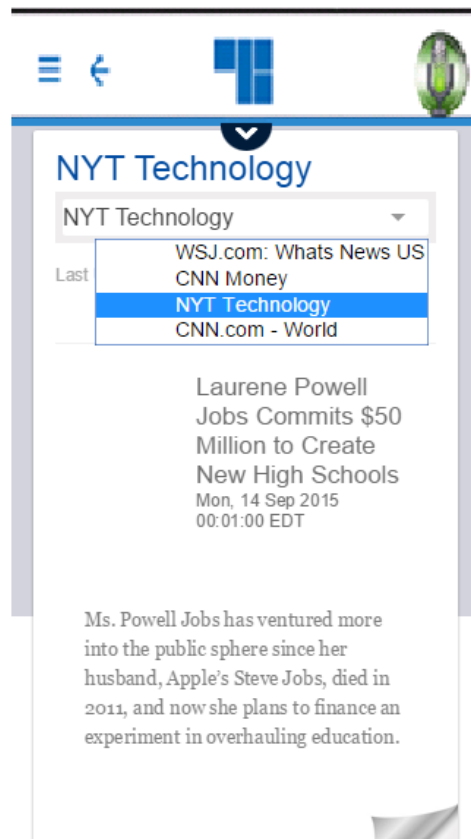
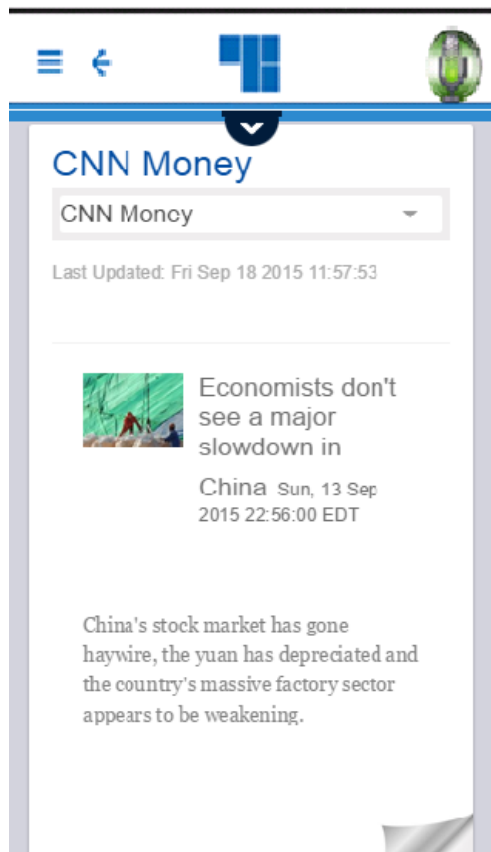
To view positions details, the user must select the required position for which he wants position details.



My News:

The user can view the entire News and their details by clicking on the 'My News' card on the home screen or 'MY News' option in side menu.

List of available news are shown. User can see the variety of news by selecting news category from the list.



Alerts:

The user can set alerts for an index or scrips by clicking on 'Market List' option in side menu. The user can create a new alert or see all the alerts in this screen.

- **New Alert**

The user can set an alert by clicking on the 'Set Alert' button.

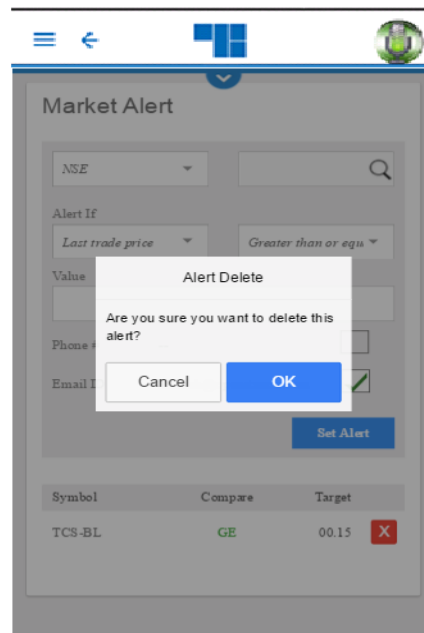


Symbol	Compare	Target
TCS-BL	GE	00.15 X

The user must select the desired Exchange, enter the Symbol/ Name, which will show an overlay from where he must select the desired symbol, and select the 'Alert if' option from the drop down (Last Traded Price/ Bid Price and so on), select the option for greater than or equal to, or less than or equal to and so on, and enter the value for the alert. If the user wishes to receive a text message for the alert, he must enter the mobile phone number, and if he wishes to receive an e-mail alert, he must enter the e-mail id and then set the alert.

- **Remove Alert**

To remove an alert from the list, the user must click on the red cancel button. A pop-up message will appear as follows, to confirm the removal of the alert.



Index Watch:

The user can use the 'Index Watch' option by clicking on 'Index Watch' in the side menu or on the 'Index Watch card' to view all the indices and their values.

Indices	Current	Change	%	
SENSEX	29830.94	2514.76	9.20%	>
CNX Nifty	8739.05	-28.20	-0.32%	>
S&P CNX 500	7119.85	-24.35	-0.34%	>
BANK Nifty	18676.90	-56.15	-0.29%	>
CNX 100	8725.00	-31.0	-0.35%	>
CNX Midcap	12923.70	-78.39	-0.60%	>
CNX Nifty Junior	19386.45	-103.80	-0.53%	>
CNX IT	12578.70	-54.64	-0.43%	>
DHAANYA	2686.70	10.88	0.40%	>
MCXAGRI	0.00	--	--	>



• Top 10

From the side menu, the user can select the 'Gainers/Losers' option to view the Top 10 Gainers/ Losers.

The user must select the Category/ Basket of scrips from the dropdown, for which he wants to view the Top 10 Gainers/ Losers.

The following window shows the Top 10 Gainers among scrips, based on % change previous close value in NSE Open Market.

Symbol	LTP	Value(in Lakhs)
ATFL-EQ	560.00	-6.36
LT-EQ	1584.60	-1.90
AARVEEDEN-EQ	50.50	-0.69

The following window shows the Top 10 Losers among scrips, based on % change previous close in NSE Open Market.



Top 10 Gainers/Losers

Category: %CHANGE PREV CLOSE

Basket: NSE OPEN MARKET

Symbol	LTP	Value(in Lakhs)
SBIN-EQ	250.00	9.91
RELIANCE-EQ	924.80	6.34
DLF-EQ	130.90	5.65

Account Information:

This screen shows detail information about account holder like Account detail, Personal detail, Contact detail, Bank details etc.

Account Information

Account Details

Client Code: ZLITE10

Login ID: ZLITE10

Personal Details

Name: G EKAMBARAM

Resid. Address: EA TRI PO, CHITTOOR DIST

Office Address: PENUMURU

PAN No.: XXXXX620K

Contact Details

Mobile No: 9533385954

E-mail ID: ekambaram1914@gmail.com

Bank Details

Bank Name: STATE BANK OF INDIA,--

Bank A/C. No.: XXXXXX3515,--

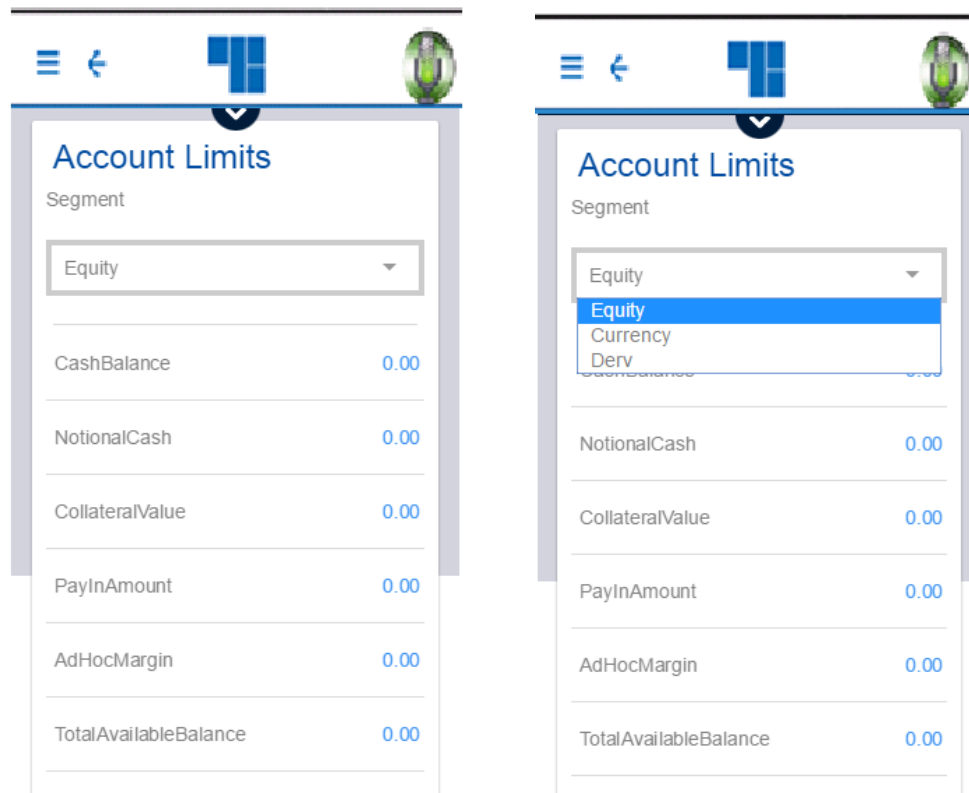
Branch: --,--

Bank Address: COLLECTORATE BRANCH



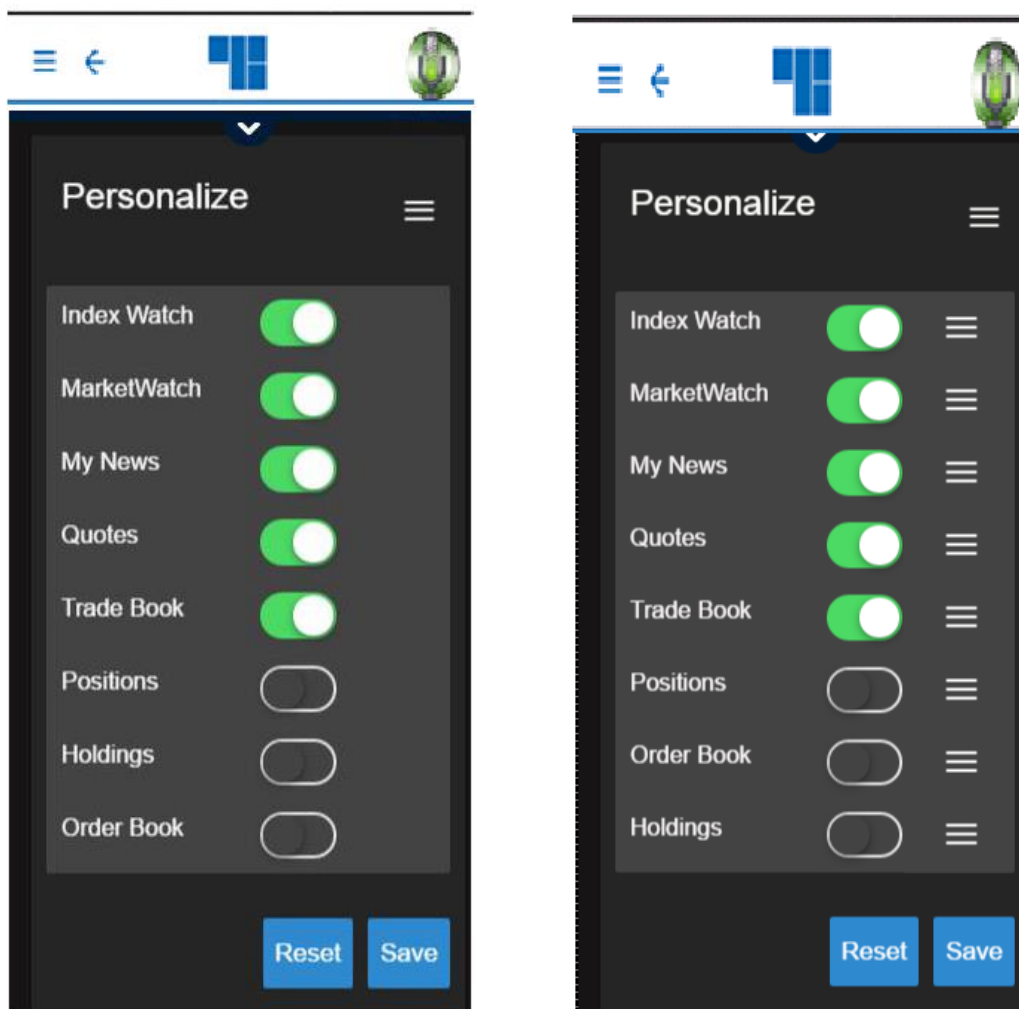
Account Limits:

This screens indicates account limits for various segments like Equity, Currency, Derv. each of this segments have different or same number of limits. There is various items like Cash Balance, Notional Cash etc.



Personalize:

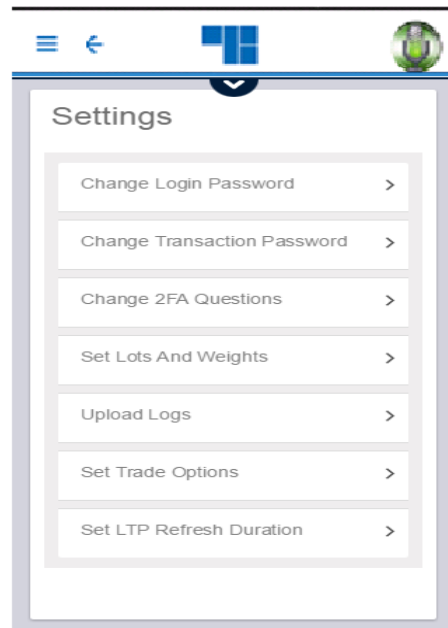
User can click on 'Personalize' from the side menu for personalizing Home screen. User can enable or disable any card by toggling switch buttons and also re-organize card position by dragging items. Then click on 'Save' button for saving changes made. User can revert to default state by clicking on 'Reset' button.



Here screen 2 indicates re-organization of cards

Setting:

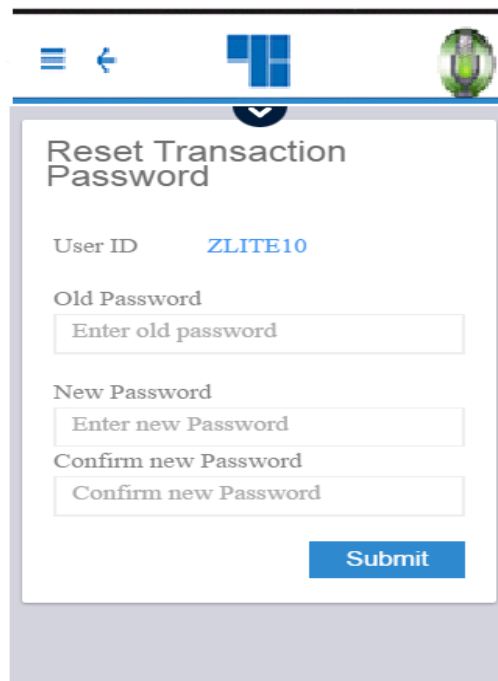
User can click on 'Settings' from side menu to view settings screen. User can make any changes like 2FA, Trading options, LTP Refreshing time, uploading logs, changing transaction password etc.



Main screen of setting page

Changing of Transaction password:

Transaction password can change by entering old password and then enter new password twice.





Changing of set lots and weights:

User can change the lots or weights of different exchanges by checking lots or weights.

Exchange	Lots	Weights
MCX	<input checked="" type="radio"/>	<input type="radio"/>
NSEFO	<input checked="" type="radio"/>	<input type="radio"/>
CDS	<input checked="" type="radio"/>	<input type="radio"/>
BSEFO	<input checked="" type="radio"/>	<input type="radio"/>
MCXSX	<input checked="" type="radio"/>	<input type="radio"/>
MCXSXFO	<input checked="" type="radio"/>	<input type="radio"/>

Save

Set Trade options and LTP refresh duration:

User can pre set values for trade options like quantity, price-type, product-code for any exchanges. These values will be pre-populated while placing order.

LTP refresh duration setting indicates that user can set the values of LTP refresh time in seconds. LTP value in trade form will get refreshed automatically for the duration set.



Trade Options

For your convenience, trading options can be pre-set below on a per segment basis. Select the segment below to view/save the settings.

Exchange:

Quantity:

Price Type:

Product Type:

[Save](#)

LTP Refresh Duration

For your convinience, Last Traded Price (LTP) for the scrip displayed in the Order process (Buy/Sell/Modify) will be periodically refreshed. Please set the refresh duration.

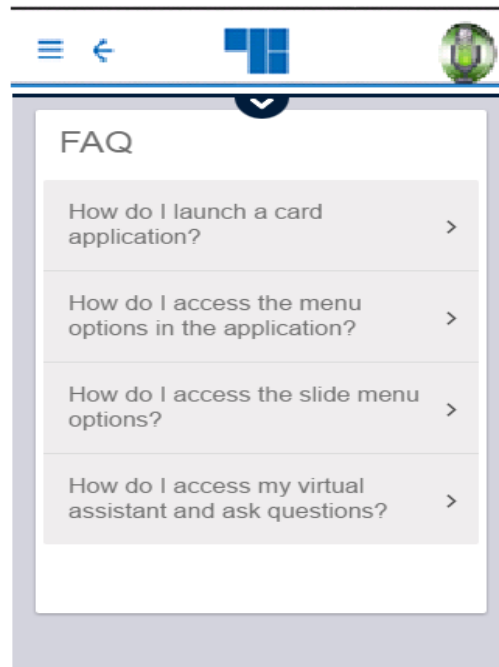
Time in Seconds:

[Save](#)

Note : Change 2FA screens and Change password field already mentioned in top

Help:

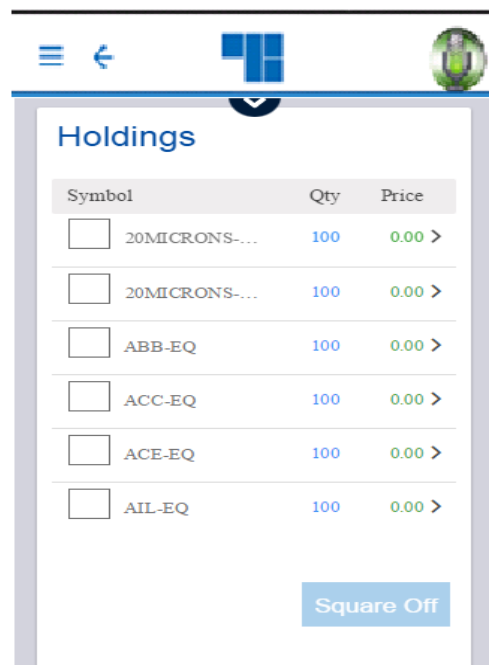
User can click on 'Help' from side menu to view help. User can select from list of



FAQs for more information.

Holdings:

User can click on 'Holdings' option from side menu to view his holdings.





Holding details:

User can select individual holding item to view more details.

The screenshot shows a mobile application interface for holding details. At the top, there is a navigation bar with a menu icon, a back arrow, a blue logo, and a circular profile picture. Below the navigation bar, the title "Holdings" is displayed. The main content area contains a list of holding details:

Symbol	20MICRONS-EQ
Exchange	NSE_CM
Series	EQ
Price	0.00
Quantity	100
Ltp NSE	27.80

At the bottom right of the holding details section, there is a blue button labeled "Square Off".



Square Off:

User can perform Square off for single or multiple holdings by clicking 'Square Off' button. For single square off user can enter quantity and click on 'Submit' button.

Square Off

You have 100 Shares. Enter the quantity to square off

Quantity

Options Submit Cancel

Price 0.00

Quantity 100

Ltp NSE 27.80

Square Off

Square Off

Orders will be placed with the below details

Symbol	Shares
20MICRONS-EQ	100
20MICRONS-EQ	100
ABB-EQ	100

Submit Cancel

ACC-EQ 100 0.00 >

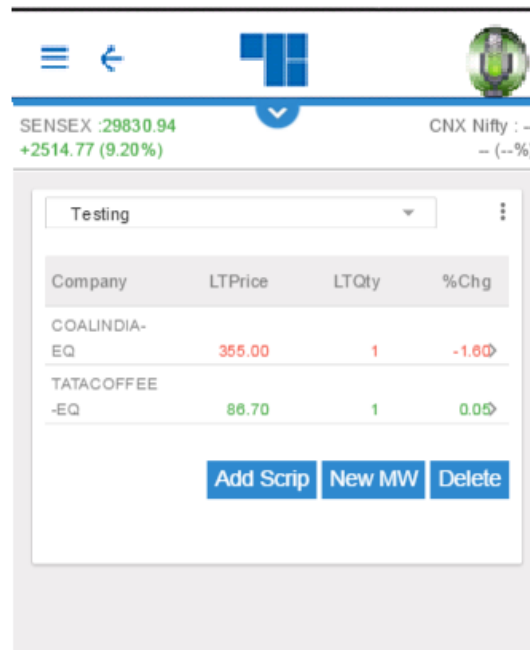
ACE-EQ 100 0.00 >

AIL-EQ 100 0.00 >

Square Off

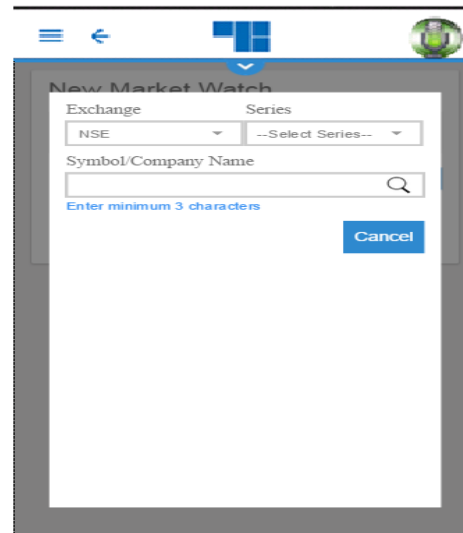
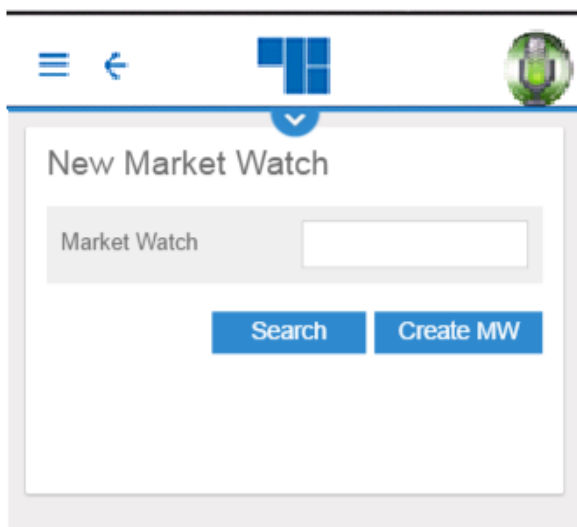
Market Watch:

The user can add/ view/ remove a Market Watch Group by clicking on the 'Market Watch' option in the side menu or on 'Market Watch card'. Initially it will show default market watch list. User can view a new market list by selecting Market List from drop down overlay.



• New Market Watch

The user can create a Market Watch of scrips for which he wants to view latest market feeds by clicking on the 'New MW' button from the 'Market Watch' screen.

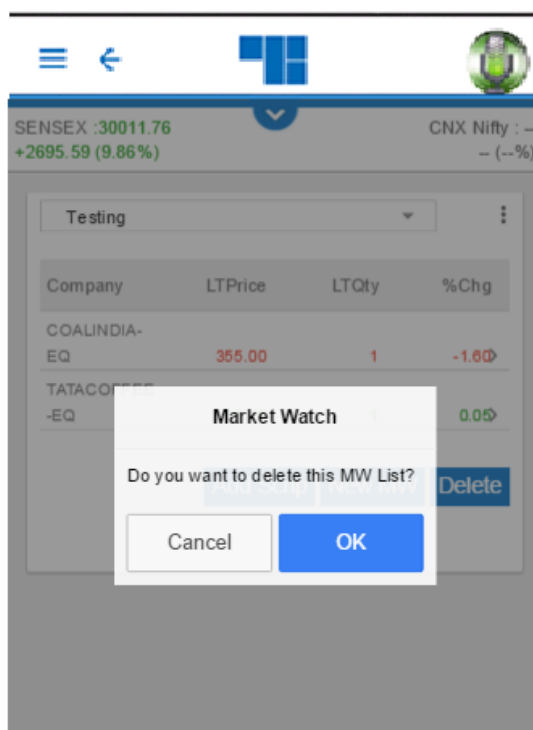




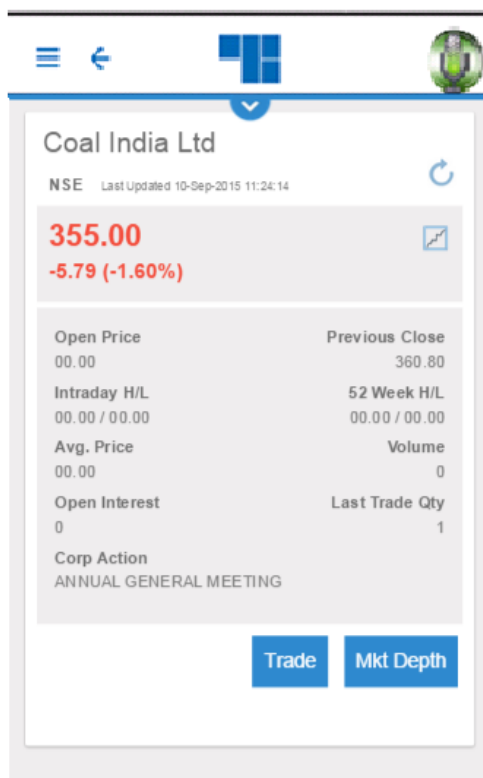
The user must enter the Name for the Market Watch that he wants to create, select the desired Exchange, enter the Symbol, and click on 'Add Market Watch'. A pop-up message will appear to confirm saving the market watch group. When the user clicks on 'OK', the market watch group will get added with the selected scrip. (If the user clicks on 'Cancel', the new market watch will not get added)

- **Delete Market Watch**

The user can delete an existing Market Watch Group by selecting the Market Watch Group from the 'Market Watch' window and clicking on the 'Delete' button. The following pop-up message will appear to confirm the market watch deletion.



The user can also view the Market Snapshot for any scrip by selecting that particular scrip.



Note: The user must click on a name in the 'Market Watch' window to stream its Market Watch data in the ticker. For an expanded view, the user must select 'Market Watch' from the menu.

End of Document

For any inquiry.

Contact Us

Trust Line Securities Limited.

Phone No. 0120-4613888

Mail Id. helpdesk@trustline.in